



LOCATION		DATE
PREPARED BY		QUANTITY
COMMENTS		FIXTURE TYPE
CATALOG NUMBER		

Daniel LED Outdoor Ceiling DANW Series

Features

Pivoting heads to adjust light direction.
Ideal use for general lighting in outdoor residential, commercial, and hospitality applications. Fixture can be mounted to a standard junction box (not included) on a wall or ceiling.

Construction

Polycarbonate housing and painted in weather resistant powder coating.
Power supply connections must be made inside a junction box (not included).

Finish

Black, Textured Grey or Oil-Rubbed Bronze* finish.

Diffuser

Frosted polycarbonate diffuser.

Electrical

Input 120 VAC / 60Hz.
Minimum starting temp -4° F/-20° C
Integrated photocell for dusk to dawn operation.

LED

Integrated LED modules capable of producing:
12W = 1000 delivered lumens
Adjustable Choice 3000K, 4000K, 5000K (CCT).
Rated for 50,000 Hrs. 80 CRI.

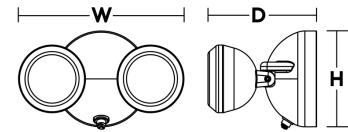
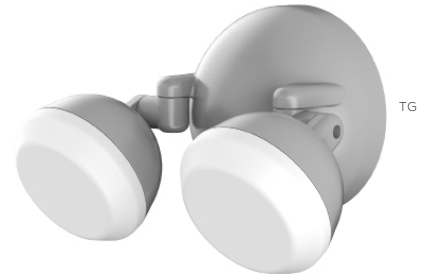
Certification

All fixtures are cETLus listed for outdoor wet locations.
Title 24/JA8 Compliant
Ideal for coastal applications (IP65)

Warranty

5 Year Limited Warranty:
Restrictions apply based on location.

**Specifications and dimensions
subject to change without notice.**



Ordering Information:

Black	Textured Grey	Oil-Rubbed Bronze	LED	Delivered Lumens	Adjustable CCT	H	W	D
DANW0706LAJENBK	DANW0706LAJENTG	DANW0706LAJENBZ*	12W	1000	3000K/4000K/5000K	6"	7-3/8"	5-1/2"

*Minimum order quantity required, consult factory.